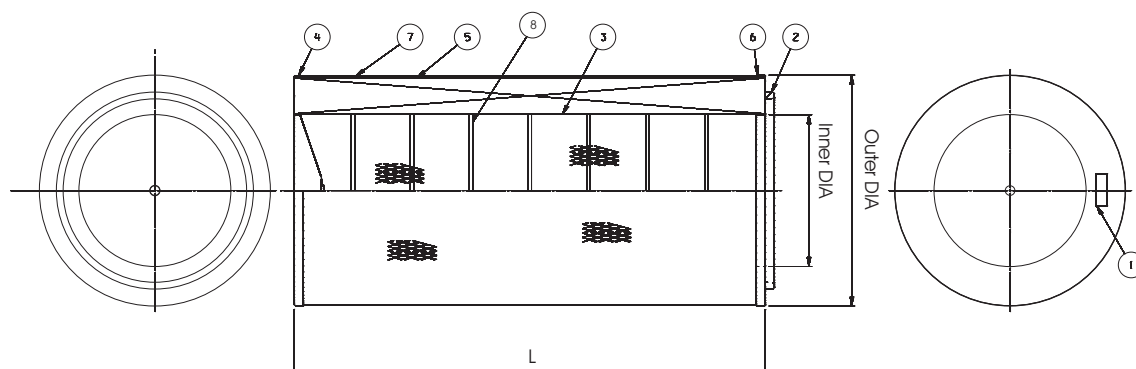


# Replacement Elements Cartridges

## Series 324



**Open top flange**  
Closed bottom + hole 13 mm

### SPECIFICATIONS

Number	Description	Symbol	Dimension
1	Marking	L	600 - 660 - 1000* - 1200 mm
2	Gasket	Inner DIA	213 mm
3	Inner liner	Outer DIA	324 mm
4	Bottom end cap with 13 mm hole		
5	Media pack		
6	Top end cap		
7	Outer liner		
8	Inner beading		

Available media qualities:	
- Ultra-Web®	
- Ultra-Web® Flame Retardant	
- Cellulex™	
- Cellulex™ Flame Retardant	
* Only available in UW	

# Replacement Elements Cartridges

---